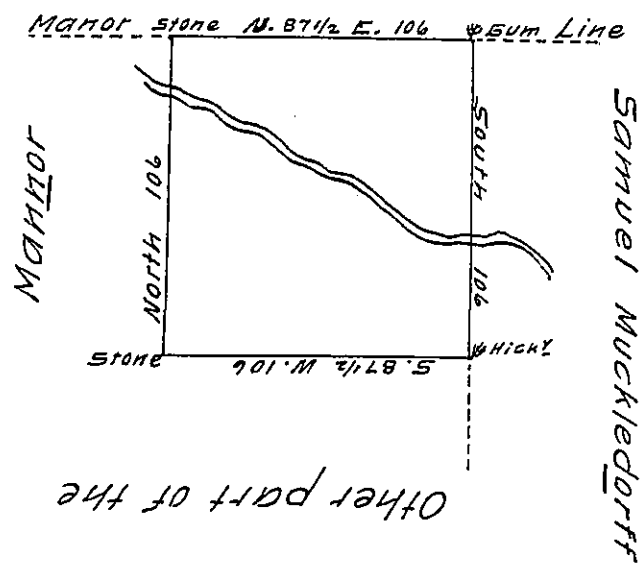


W^m Darlington.

A Draught of a tract of land situate in Springtown Manor in the County of Chester now in the possession of William Darlington beginning at a marked hickory in a line of Samuel Muckledurff's land thence by other part of said Manor S. 87 $\frac{1}{2}$ West 106 perches to a stone and North 106 perches to a stone in the Manor line thence along said line N. 87 $\frac{1}{2}$ E. 106 perches to a ^{marked} Sum, thence by land of Samuel Muckledurff South 106 perches to the place of beginning containing sixty six acres & one quarter of an acre ~~with~~ and the allowance of 6 $\frac{1}{100}$ for Roads &c. Surveyed the 18th day of October 1753 by direction of the Hon^{ble} the Proprietaries.

Nich^o Scull —

Duplicate

IN TESTIMONY that the above is a copy of the original remaining on file in the Department of Internal Affairs of Pennsylvania, made conformably to an Act of Assembly approved the 16th day of February, 1833, I have hereunto set my Hand and caused the Seal of said Department to be affixed at Harrisburg, this twenty fourth day of March 1910

Henry Horvath
Secretary of Internal Affairs.